



ABOUT THE DESIGNERS



NAUSHEEN MASOOM

I'm an Interior Design student at AAFT University with a passion for blending traditional concepts like Vastu with modern design. I'm skilled in hand sketching and an expert in AutoCAD and 3ds Max.



AYUSH VERMA

I'm an Interior Design student at AAFT University with a passion for creating innovative and functional spaces. I enjoy blending modern aesthetics with practical design solutions. Skilled in AutoCAD and 3ds Max, I bring my concepts to life with precision and creativity.



SWALEHA

I'm an interior design student of AAFT University. Creative interior designer with expertise in transforming spaces, optimizing layouts, and blending style with functionality. Skilled in color theory, material selection, and client collaboration to create stunning, personalized designs.



ASHISH TIWARI

I'm an Interior Design student at AAFT University. I have a passion for modern, functional design solutions. I'm skilled in AutoCAD and 3ds Max for precise and creative visualizations.



SANJANA CHAUHAN

I'm an Interior Design student at AAFT University who loves designing creative and meaningful spaces. I enjoy working with colors, textures, and hand-drawn concepts.

MASQUERADE LUXE LOUNGE



The setup reflects the vibrant and festive spirit of Brazilian culture , particularly inspired by the famous festival ‘The Rio Carvival’

BRAIN STORMING

HISTORY

Brazil was colonized by Portugal, gained independence in 1822. And later become republic in 1889. It experienced period of military rule, economic growth and democratic reforms which emerging as a major global economy.

FESTIVAL

- CARNIVAL
- FESTA JUNINA
- REVCILLON
- FESTA DE GRAMADO
- ROCK IN RIO
- BUMBA MEU BOI

GEOGRAPHICAL FEATURES

- Amazon Rainforest
- Pantonal wellands.
- Atlantic forest.
- Coastal Regions with long Beache
- Flora and Fauna. + Rich in minerals.

ARCHITECTURE

- Portuguese colonial Influence
- Baroque churches
- Neoclassical Buildings
- Art Deco structures

CITY

- BRASILIA - The modern capital and political center.
- FORTAIEZA - A coastal city.
- MANAUS - Gateway to the Amazon rainforest.
- RECIFE - "The venice of Brazil".
- SALVANDOR - Known for its Afro-Brazilian culture.

LANGUAGES

- Portuguese
- German
- Italian
- Spanish
- English

CULTURE

- Indigenous
- Portuguese
- Carnival
- Football Passion
- Street Art and Graffiti
- Forro and Rrevo {music and dance}

FURNITURE STYLE

- Handcrafted Details.
- Hommocks & lounge seating
- Colonial Influence

HISTORY

Brazil's history span over 500 years, rich and diverse.

Brazil was colonized by Portugal in the 1500s . It remained under Portuguese rule for centuries until it gained independence in 1822 . Later , Brazil transitioned from being a monarchy to a republic in 1889 .

Over the years , Brazil experienced various phases of political and social changes , including military rule , followed by economic growth and the introduction of democratic reforms . These efforts helped Brazil to emerge as a major global economy , with growing influence in world politics , culture and trade .



Pre-Colonial Era

- Indigenous peoples inhabited Brazil for thousands of years before European arrival.

Various tribes, such as Tupi and Guarani, developed complex societies.



Republican Era (1889-1930)

- A military coup overthrew the monarchy, establishing the First Brazilian Republic.
- Coffee and rubber drove economic growth.
- Immigration from Europe increased.



Contemporary Era (1985-present)

- Brazil transitioned to democracy in the 1980s.
- Economic reforms and globalization drove growth.
- Brazil became a major player in regional and global affairs.



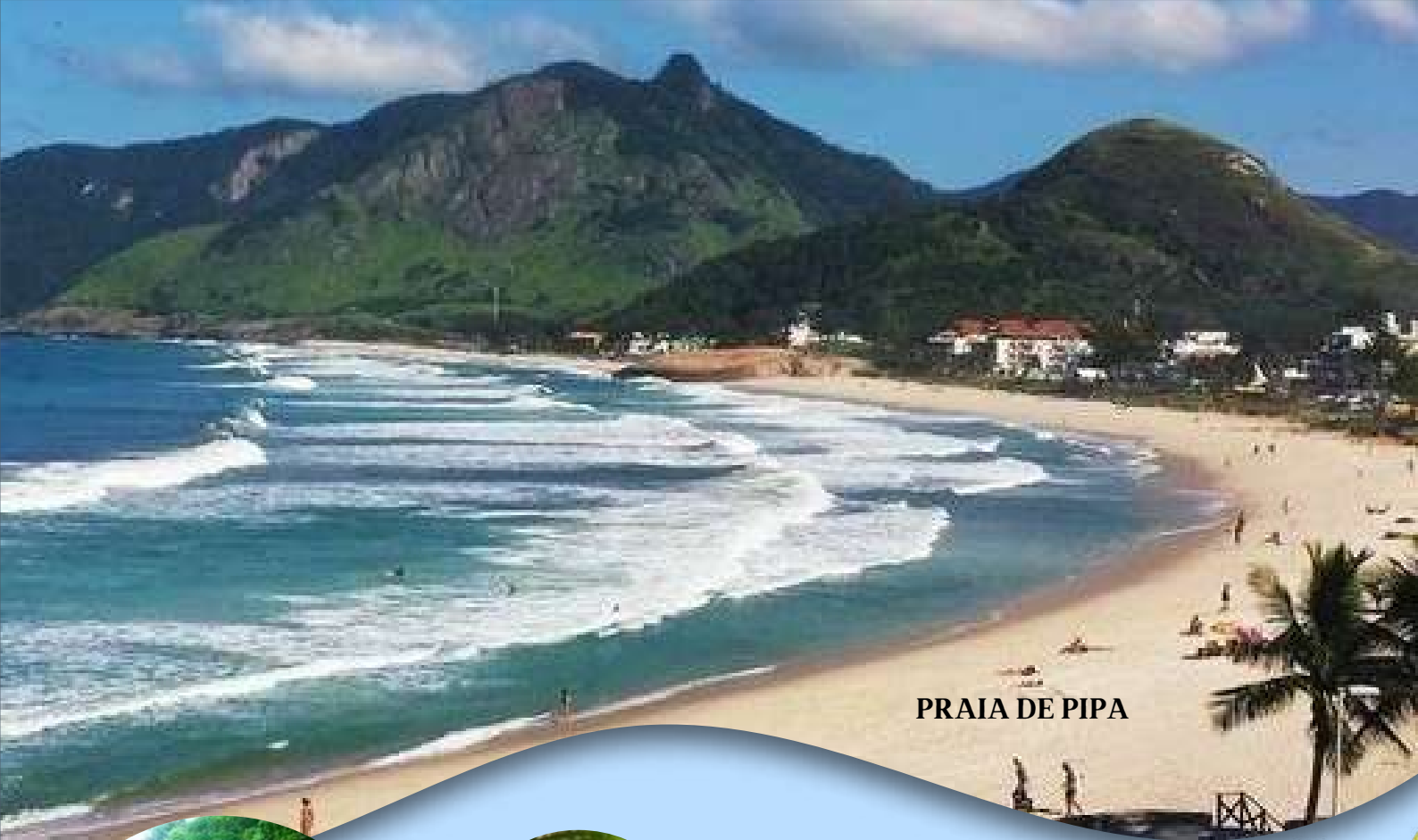
Colonial Era (1500-1815)

- Portuguese explorer Pedro Álvares Cabral arrived in 1500.
- Brazil became a Portuguese colony with sugarcane and gold driving the economy.
- Slavery was widespread, with millions of Africans forcibly brought to Brazil.

Imperial Era (1815-1889)

- Brazil gained independence in 1822, with Pedro I as its first emperor.
- Coffee became a major export, and slavery continued.
- Abolitionist movements led to the eventual abolition of slavery in 1888.





PRAIA DE PIPA



AMAZON RAINFOREST



TOUCAN



ARA MACAO

GEOGRAPHICAL FEATURES

Brazil is known for its diverse geography and rich natural resources. It is home to the Amazon Rainforest, the largest tropical rainforest in the world, known for its incredible biodiversity. And supporting a wide range of wildlife.

The country has diverse flora and fauna, with thousands of unique plant and animal species. Brazil is also rich in minerals like iron, gold, and bauxite, making it an important global source of natural resources.

CULTURE

Brazil's culture is a vibrant fusion of its Indigenous heritage and Portuguese colonial past.

One of Brazil's most iconic cultural expressions is the Carnival, a grand celebration of life, color, and rhythm. Featuring samba music, dazzling costumes, and parades.

Brazilian streets themselves become canvases

through street art and graffiti, with cities like São Paulo showcasing powerful murals. Music and dance are at the heart of the culture, especially forms like Forró and Frevo.

CITY

Brazil is a country of vibrant cities, each offering a unique blend of history, culture, and modernity. Brasília, the nation's capital. Heading northeast, Fortaleza welcomes visitors with its stunning coastal beauty and energetic nightlife. Further into the heart of the Amazon lies Manaus, the gateway to the rainforest. On the northeastern coast, Recife, often called "The Venice of Brazil".



FESTIVALS

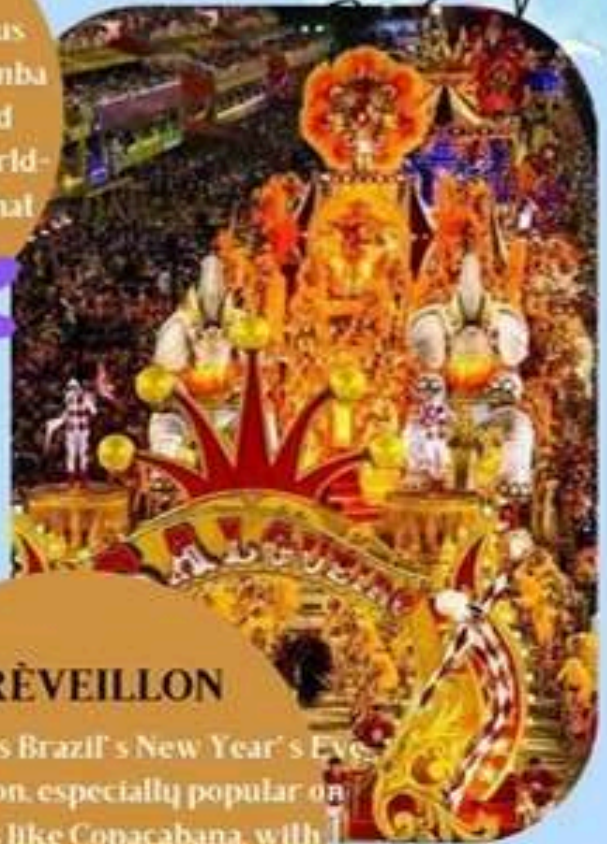
CARNIVAL

Carnival is the most famous festival celebrated with samba parades, music, dance, and colorful costumes. It is a world-renowned street festival that brings cities to life.



RÈVEILLON

Réveillon is Brazil's New Year's Eve celebration, especially popular on beaches like Copacabana, with fireworks and white clothing symbolizing peace and renewal.



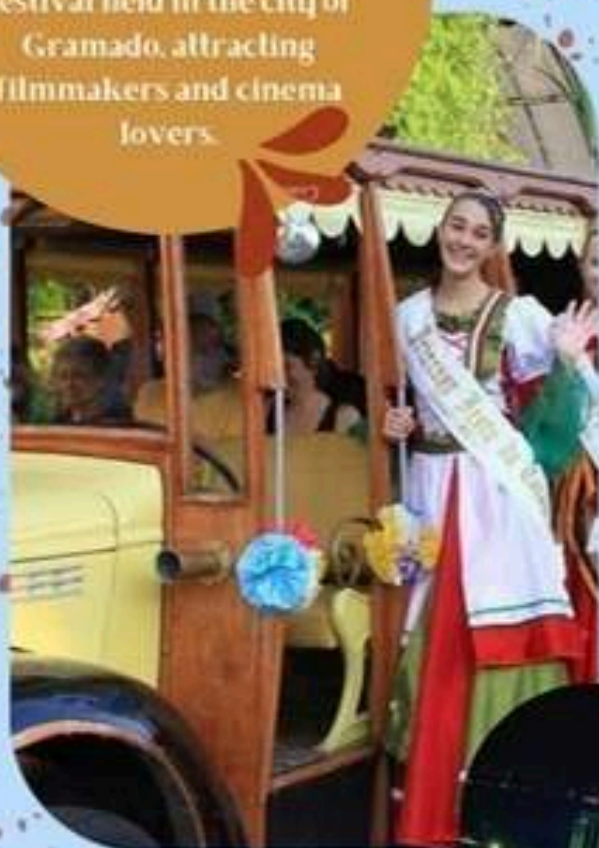
FESTA JUNINA

Festa Junina is a traditional June festival that celebrates rural life with folk music, dance, bonfires, and traditional foods. It honors Catholic saints like St. John.



FESTIVAL DE GRAMADO

Festival de Gramado is a famous Brazilian film festival held in the city of Gramado, attracting filmmakers and cinema lovers.



BUMBA MEU BOI

Bumba Meu Boi is a traditional folk festival featuring music, dance, and theater. It tells the story of a resurrected ox and blends Indigenous, African, and Portuguese cultures.

ROCK IN RIO

Rock in Rio is an international music festival that originated in Brazil. It hosts global artists and attracts massive crowds, making it one of the biggest music events worldwide.



Brazilian architecture is a unique blend of indigenous, European, and African influences. Here are some notable styles and features:

Colonial Architecture

1. **Baroque:** Influenced by Portuguese architecture, seen in historic cities like Salvador and Olinda.
2. **Portuguese colonial:** Characterized by ornate details, tiles, and balconies.

Modern Architecture

1. **Art Deco:** Popular in the 1930s–1940s, seen in buildings like the Rio de Janeiro's Monroe Palace.
2. **Modernist:** Influenced by international styles, with emphasis on functionality and simplicity.

ARCHITECTURE

Iconic Buildings

1. **Brasília's Modernist Architecture:** Designed by Oscar Niemeyer, featuring futuristic and abstract forms.
2. **São Paulo's Octávio Frias de Oliveira Bridge:** A striking example of modern engineering.

Cultural Influences

1. **African influences:** Visible in Afro-Brazilian communities, particularly in northeastern Brazil.
2. **Indigenous influences:** Reflected in traditional architecture, such as wooden structures and thatched roofs.

Notable Architects

1. **Oscar Niemeyer:** Known for modernist and futuristic designs.
2. **Lúcio Costa:** Designed Brasília's urban plan.

Brazilian architecture reflects the country's diverse cultural heritage and its evolution over time.





LANGUAGES

Português

Languages play a vital role in connecting cultures and preserving heritage. Portuguese, spoken widely in Portugal and Brazil, is known for its rich literary and musical tradition.

Spanish

english

german

ITALIAN

German stands out as a key language in Europe, especially in fields like engineering, philosophy, and business. Italian, with its melodic tones, is deeply linked to art, fashion, and history. Spanish, one of the most spoken languages worldwide.

English, serving as a global lingua franca, dominates in international media, education, and technology, making it indispensable in today's interconnected world.



Furniture style is defined by a blend of handcrafted details and cultural influences, offering both beauty and functionality.

preference for eco-friendly materials. Modern furniture increasingly features polyester and olefin textiles, known for their durability, weather resistance, and environmental benefits,

FURNITURE STYLE



NAME : Mayara Lima

AGE : 28 years

GENDER : Female

LOCATION : Brazil

ABOUT THE CLIENT

Mayara lima is a vibrant samba dancer whose infectious energy , grace and love for her culture light up every performance.

The aim is to create the environment that mirrors the vibrancy and dynamism of brazilian culture, and carnivals. the objective is to design the furniture that is not only capture the lively essence of samba but also serve as functional , comfortable and aesthetically striking pieces.

This setup aspires to combine cultural expression with everyday usability , celebrating rhythm and flair in every detail.



"All the News
that's Fit to Print"

CLXVII ... No. 58,062

PLEAD.

The

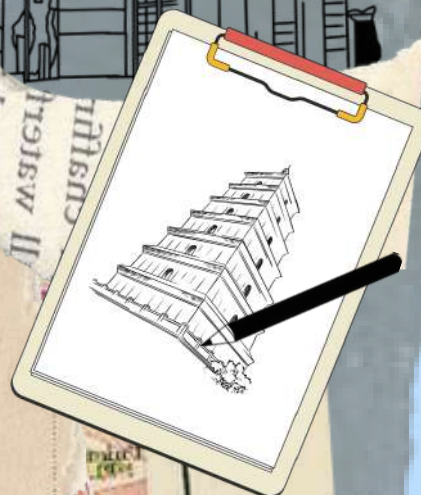
nt you dec
our chose
l become
earn. My

some of these
men ascend
you meet
ead, but
to (in
sorb and
om: do
ob dttoc

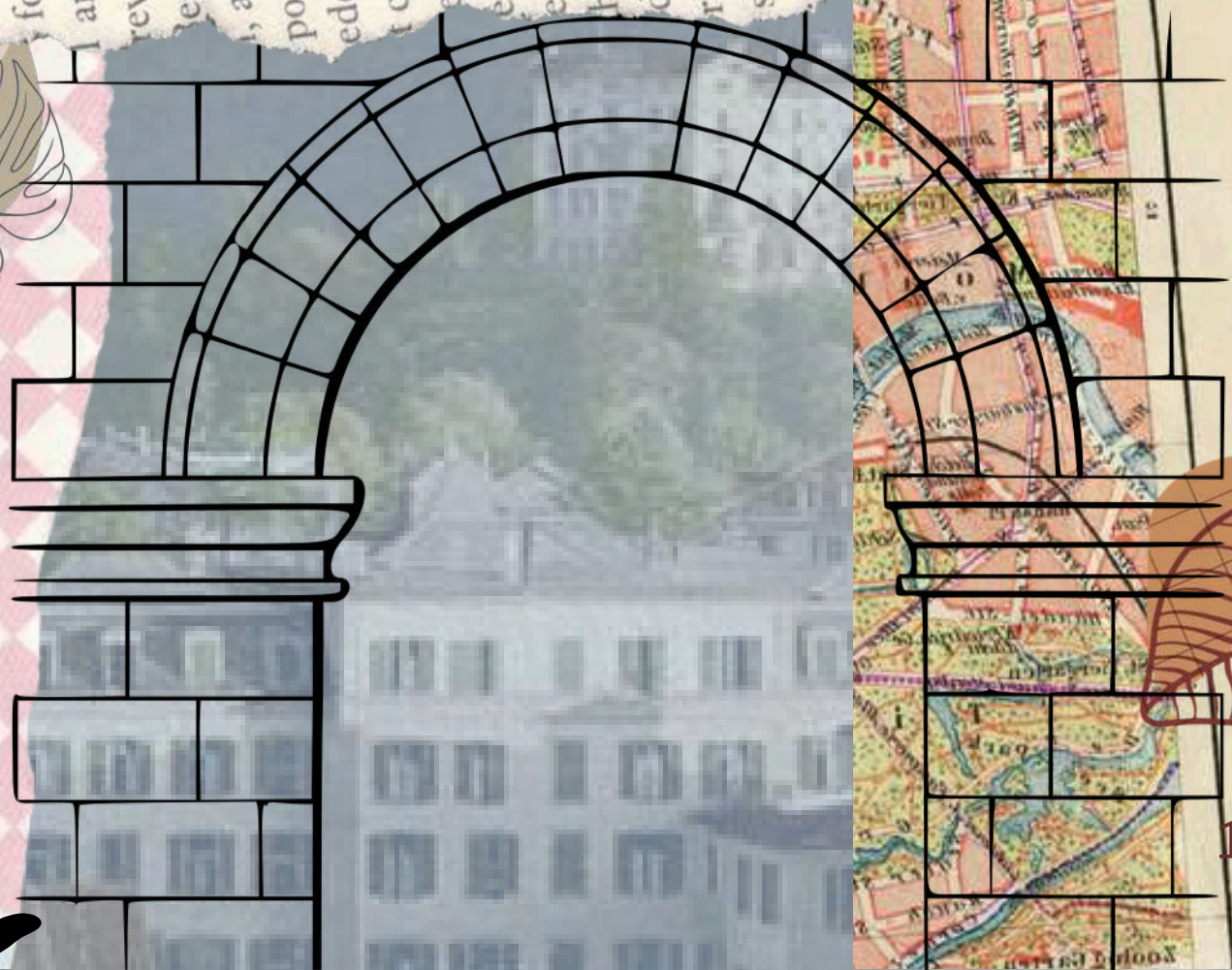
poor Rat
eded
t cam
e s
ed r
e d
he

poor Rat
a knot
besides
1946
sne
for q
liq noth
crafts

PRESENTATION BOARD



chaffir
ll waterf
did nothi
for d
I an
rever
besides
, a knot
poor Rat
eded
t cam
e d
he
d t
rim
sha
W



✦ Embrace life with boldness and joy, like a dancer moving to their unique rhythm. Every step is an opportunity to create beauty and inspire others. Let your vibrant spirit shine and lift those around you higher!



INSPIRATION BOARD

MOOD BOARD



MATERIAL BOARD



18mm ply wood
used for base

Nova Fabric used to cover
the structure of sofa



Century Ply Wood
used to make the sofa and
center table structure



Meranti Wood
used for side columns



2*2 Pine wood
used for base

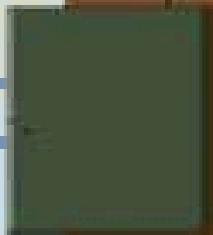


Flexible ply



Carpet

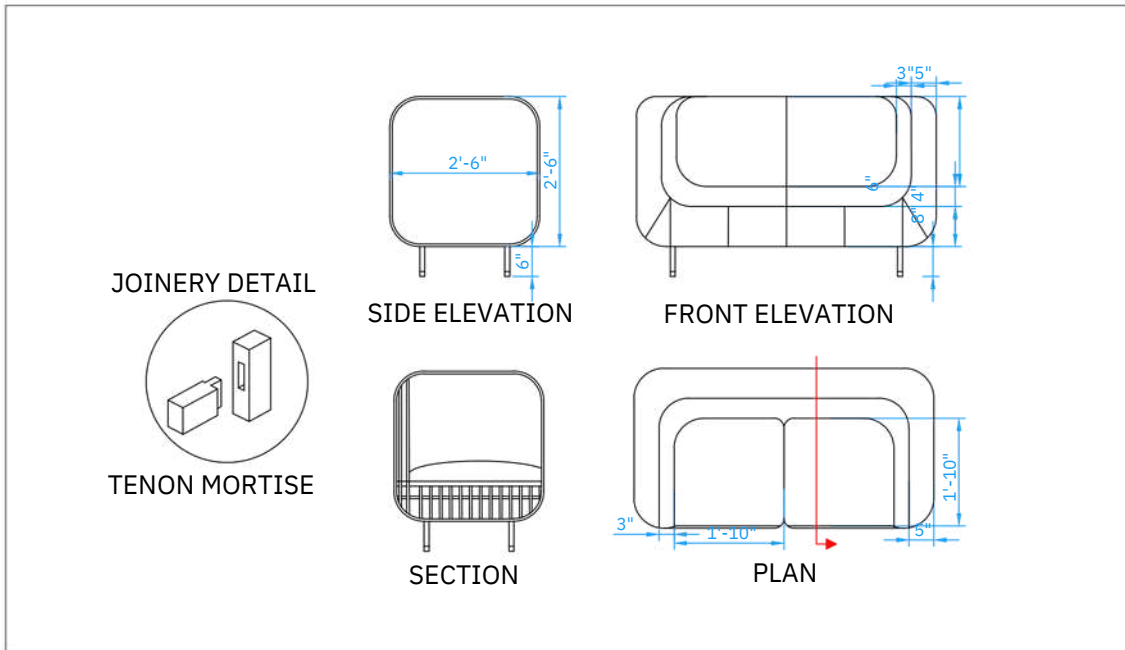
Feather form
used to make feathers



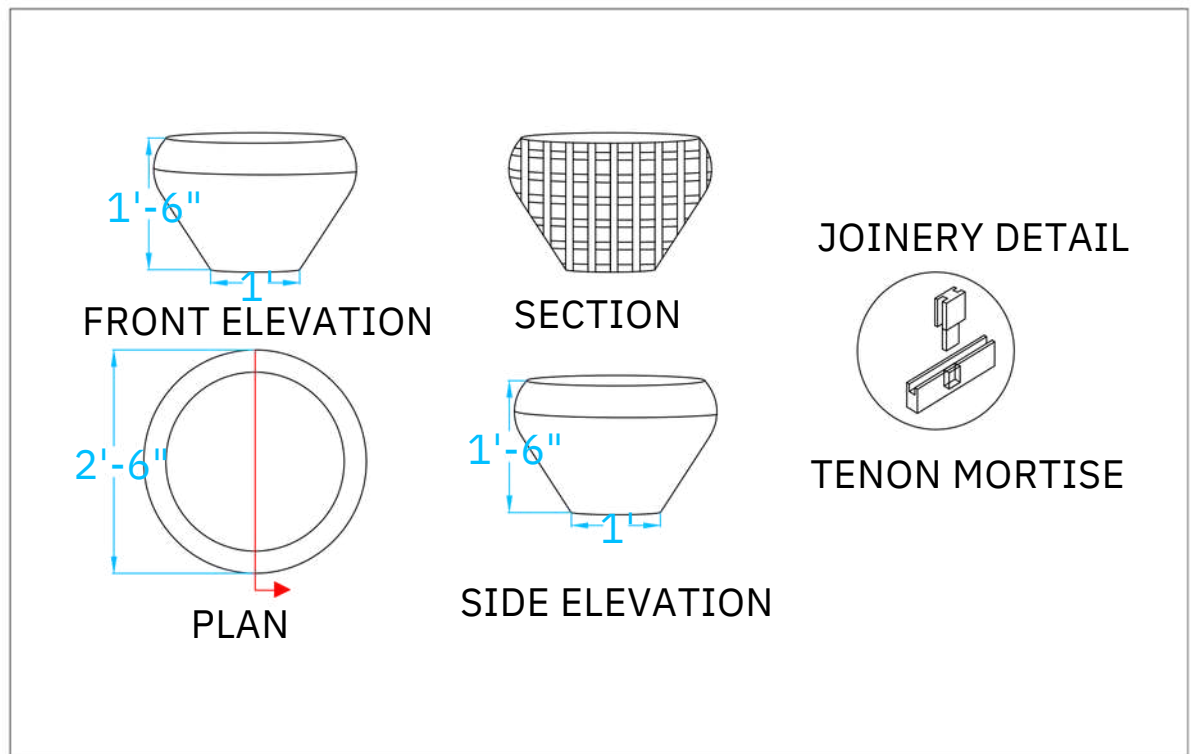
Foil Fabric
used to cover center
table structure



TECHNICAL DRAWINGS



SOFA



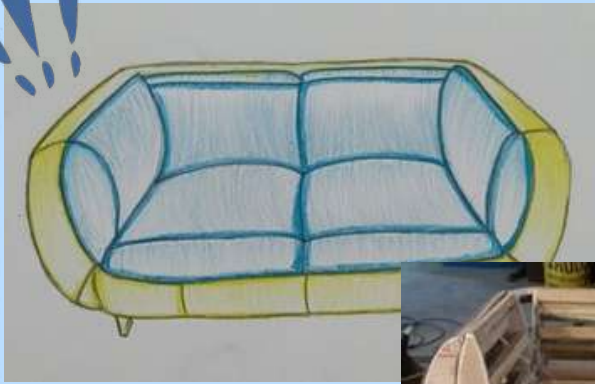
CENTER TABLE

3D RENDERS



MAKING

SOFA



CENTER TABLE



ACCESSORIES



FINAL SETUP



CREDITS

Thanks to A.R. Geetika Updhyay and AAFT SOID Udhyog marg Noida for their unwavering support and expertise in imparting essential knowledge and fostering an environment of innovation in interior design

ACKNOWLEDGMENT

We extend our heartfelt gratitude to our mentors and educators who have been instrumental in shaping our vision and creativity. Your guidance, wisdom, and encouragement have played a pivotal role in preparing us for this endeavor.

