



# Aphrodite's Bloom

HELLIM

Elegance  
carved in quiet grace



# ABOUT THE DESIGNERS



VARSHA

*A former teacher with a Master's in Physics and a B.Ed., She brings a blend of intellect and creativity to her designs. She is currently pursuing Interior Design. Passionate about crafting home décor items.*



TANYA

*An English Hons graduate and interior design student, Tanya is passionate about art. Her refined aesthetic adds a thoughtful, creative touch to the designs.*

## OUR PROMISE TO YOU

*Crafted with heart, rooted in tradition, and designed with purpose — we promise timeless pieces that tell a story.*

01

*Expression*

Cuisine and  
Cultural  
Relevance

02

*Client & Concept*

Designing  
profile for a  
showcase.  
Fusion,  
culture.

03

*Furniture*

Accent  
cabinet  
inspired by  
halloumi and  
tradition.

# CONTENTS

04

*Accessories*

Culture and  
forms rooted in  
Cyprus's  
history.

05

*boards*

Material,  
mood boards  
and  
development.


06

*Technical Drawings*

Detailed  
measurement  
s and  
construction  
layout.



# Aphrodite's Bloom

A person wearing a white dress with large, ruffled sleeves is holding a single white carnation flower. The person's hands are visible, with a silver ring on the ring finger of the right hand. The background is a soft, out-of-focus light grey.

He legendary  
birthplace of  
Aphrodite,  
symbolizing beauty  
and love. The word  
“bloom” reflects  
both the island’s  
natural richness  
and the idea of  
graceful  
blossoming. It  
perfectly suits the  
cabinet, capturing  
its elegant, floral  
design and  
connecting it to  
Cypriot heritage  
and timeless  
beauty.

# CYPRUS



The crossroads of civilizations

*This country has been shaped by ancient Greeks, Romans, Byzantines, Ottomans, and the British. Each layer of its past whispers through its architecture, art, and everyday rituals. The cabinet reflects this layer history in its clean classical lines, subtle— a quiet nod to the Byzantine motifs and whitewashed village homes that dot the landscape. arched detailing, and textured carvings d*

**A White Accent Cabinet  
Inspired by the Soul of  
Cyprus**







*Expression*

# CULINARY CULTURE

01

A harmonious blend of Cyprus's culinary charm and cultural festivity—our white-golden accent cabinet draws from the halloumi dish, while maroon and golden tones echo the spirit of Kataklysmos with its lights, music, and tradition.

# HELLIM

**Halloumi** is a firm, brined cheese from Cyprus, made from sheep's and goat's milk. Its high melting point makes it ideal for grilling or frying. A symbol of Cypriot hospitality, it's served at feasts and family gatherings, and is a proud EU-protected product.







*White Accent Cabinet*

# Halloumi in Form

In the quiet elegance of a handcrafted cabinet lies a story — not just of design, but of a culture that thrives on contrast, craft, and continuity. Inspired by the Mediterranean island of Cyprus, this white accent cabinet is more than a furniture piece.

It is a tribute to the island's historical richness, design evolution, culinary heritage, and joyful celebrations. All harmoniously distilled into one sculptural form.

At the heart of this creative journey lies Halloumi — Cyprus's beloved cheese and culinary ambassador. Known for its resilience under heat, Halloumi became the metaphor and muse for the cabinet. Its firm texture, delicate saltiness, and layered simplicity inspired the structure and detailing of the piece. The cabinet, like the cheese, holds form under pressure, exudes character, and tells a story with every layer.



*The pristine white finish symbolizes the purity of Cypriot culture and reflects the sun-drenched calm of Mediterranean interiors. Yet, inside, subtle textures and hidden compartments surprise the user — much like Cyprus's festivals*



*The design draws from the celebratory spirit of the Limassol Carnival and Kataklysmos (Festival of the Flood), where tradition meets revelry, and structure makes space for joy.*



# CLIENT IDENTITY

02



**Jasmine Kaur**

Fashion Designer





### *Client Profile*

***Jasmine Kaur**, 27, is a fashion designer with a strong appreciation for cultural aesthetics and artisanal detail. She is seeking a custom cabinet design inspired by traditional **Cypriot motifs** and heritage. The design should reflect a refined palette drawn from Cyprus cuisine, particularly **halloumi**—featuring creamy whites, warm golds, and subtle herb tones.*

# The Halloumi-Inspired Cabinet

## *Concept*

*A Masterpiece of Cypriot Heritage and Culinary Artistry For Jasmine Kaur, a fashion designer with a deep appreciation for cultural aesthetics, the vision of a custom cabinet was more than just a piece of furniture—it was a tribute to the rich heritage of Cyprus. Inspired by the island's culinary icon, halloumi cheese, this design marries the traditional with the contemporary, encapsulating the essence of Cypriot heritage in every detail.*

*The cabinet features a refined color palette of whites, warm golds, drawing from the palette of halloumi and the vibrant, sun-drenched landscapes of Cyprus. The whites represent the smooth texture of the cheese.*



*While the golden accents reflect the rich warmth of the island's sunsets and its ancient rivers. The herb tones bring in the natural influence of Cyprus' fragrant landscapes—where olive groves and thyme-filled fields stretch as far as the eye can see. This custom accent cabinet is more than just a functional object; it is a celebration of Cyprus' rich culinary and culture.*

# 03 FURNITURE

*Accent Cabinet is Inspired by Cyprus's halloumi and festive culture, this cabinet blends tradition with elegance. Made of HDMR and plywood, it features a white deco-painted finish with golden intricate motifs, reflecting Cypriot art and culinary charm.*



*Measurements: Height: 3' | Depth: 1.5' | Width : 4'.*

*Placement can be in the Foyer/Entryway. A statement piece to greet guests with elegance and other examples are Living Room and Dining Area.*





*A frozen poetry –*

Built not just to hold, but to speak  
without words.



# 04 Accessories

Culture Colors and forms.



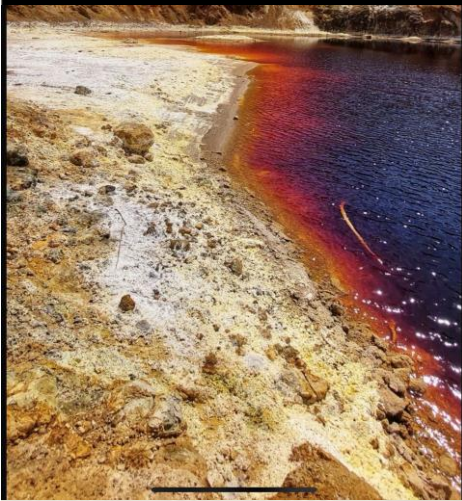


*Details that Tell a Story*

# Elements of Elegance

## RICHNESS OF GOLD

*The design also draws influence from Halloumi, the island's beloved cheese, celebrated for its unique texture and artisanal roots.*



## DEEP MAROON TONE

*Color draws its essence from Cyprus's mineral-rich terrain, particularly the oxidized waters known for their striking red-to-maroon gradients. That same depth and richness is mirrored in the decor—invoking heritage.*

## CHARM OF DESIGNS

*This bamboo woven rug features intricate mandala designs, inspired by traditional Cypriot art. Its symmetrical patterns symbolize unity and balance, reflecting Cyprus' cultural heritage.*







*The brass lanterns, carved console, and ornate mirror reflect Cyprus' traditional artistry. Candlesticks and rugs evoke festive warmth and local celebrations like Kataklysmos. These elements echo the golden charm of Cypriot culture and halloumi feasts.*

# Carved Elegance

## A Tribute to Cypriot Craftsmanship

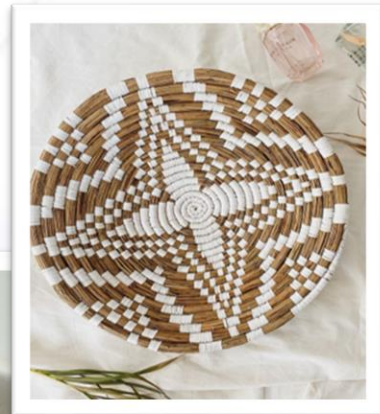
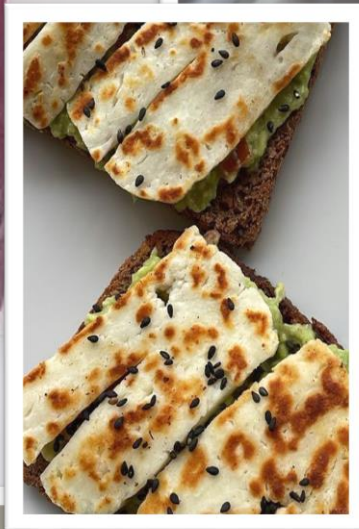
The intricate circular floral motif, seen both in the carved cabinet and traditional mandala art, pays homage to Cyprus's rich cultural tapestry. Inspired by nature and symmetry, this design reflects the island's deep-rooted heritage.



*Influenced by Greek, Byzantine, and Ottoman artistry. Often seen in architectural woodwork and decorative elements, such patterns embody harmony, skilled craftsmanship, and the timeless beauty of Cypriot tradition brought into modern living.*



# INSPIRATION



Rooted in Cypriot culture,  
our design blends halloumi  
hues, textures, and  
artisanal charm into a  
timeless form.





Using Arabic lanterns reflects Cyprus's Mediterranean-Middle Eastern heritage.

# MOOD BOARD

Natural freshness and color.

Warm  
ambiance.

To visually expand the space while offering a handy grooming spot.

Bright, eye-catching centerpiece.

It nods to Cyprus's Eastern roots with its warm, intricate patterns.



## FURNITURE LEGS

STABLE AND  
SUPPORTS  
HEAVY WEIGHT



## BLIND HINGES

ADJUSTABLE  
PERFECT, SILENT  
DOOR MOVEMENT



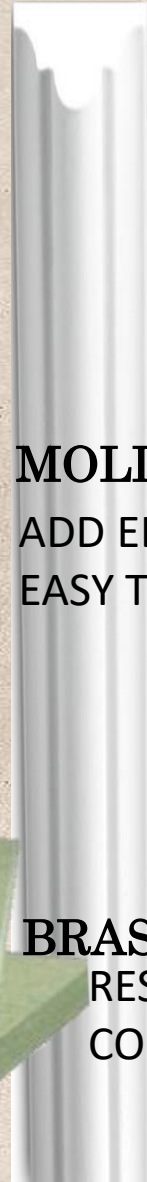
DECO PAINT  
SMOOTH AND  
LUXURIOUS FINISH



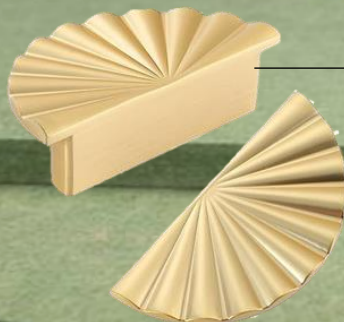
MR GRADE  
PLYWOOD  
RESISTS  
MOISTURE  
AND HUMIDITY



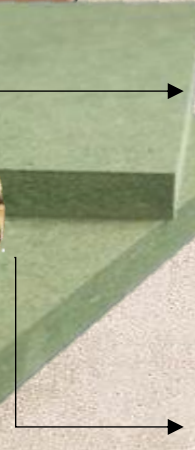
MOLDINGS  
ADD ELEGANCE,  
EASY TO REPAINT



BRASS KNOBS  
RESISTANT TO  
CORROSION



HDMR  
STRONGER, TERMITE AND BORER  
RESISTANT, SMOOTH SURFACE

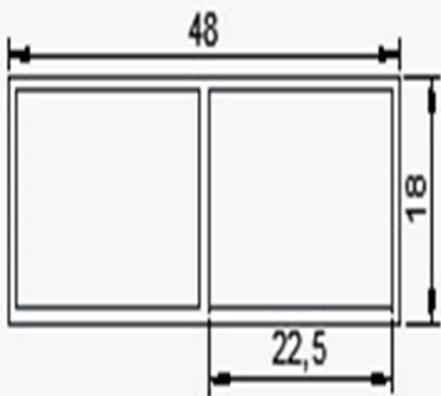


# MATERIAL BOARD

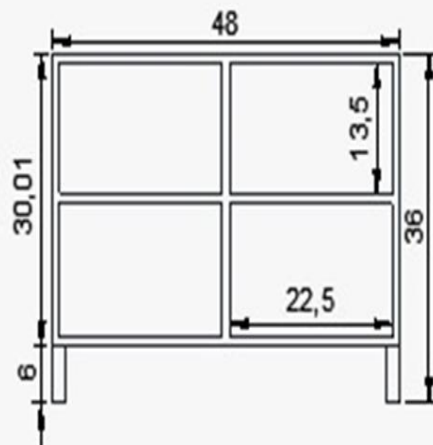


# TECHNICAL DRAWING

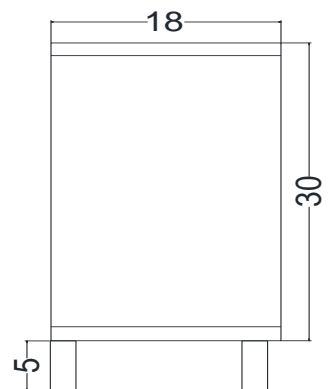
## SCALE



PLAN



FRONT ELEVATION



SIDE ELEVATION

# 3D RENDERERS



## Elegant cabinet

*Stunning blend of artistry and functionality.*

It features a luxurious floral mandala motif hand-carved on each door.



# From sketch to structure



*Every stage  
reflects a journey  
of thoughtful  
craftsmanship.*

# Aphrodite's Bloom



THE  
FURNITURE

PRESENTING

*Emphasizes tradition  
and refined design.*





# One Piece Many Stories



*Versatile in form and rich in character, our furniture blends seamlessly into any setting – from classic living rooms to modern minimal spaces. Whether paired with vintage brass accents or soft floral tones, it adapts and elevates. Each setup reveals a new side of its cultural soul, making it not just a piece of furniture, but a timeless presence in any home.*





Designed  
with purpose  
finished with finesse



# CREDITS AND ACKNOWLEDGMENT



*We extend our heartfelt gratitude to **Assistant Professor Leena Karmakar ma'am** and **Ar. Geetika Upadhyay ma'am** for their constant guidance, support, and encouragement throughout this journey. Their insights and mentorship were instrumental in shaping our concept into reality.*







# Where Culture Meets Craft

Inspired by the essence of Cyprus and the richness of Halloumi, this piece blends tradition with contemporary design. Created with care, detail, and passion — it's not just furniture, it's a story.

Designed by: Varsha and Tanya .  
Crafted with soul, Presented with pride.